

Supplementary Appendix

Appendix Table 1: Baseline characteristics of HIV-infected patients stratified by CD4 count.....	2-4
Appendix Table 2: Baseline characteristics of HIV-infected patients stratified by exposure to anti-retroviral treatment.....	5-6
Appendix Figure 1A-D: Kaplan-Meier curves for recurrent cardiac tamponade requiring pericardiocentesis: A) HIV-infected versus HIV-uninfected; B) HIV-infected on ART at baseline versus no ART at baseline; C) HIV-infected stratified by CD4 category; and D) HIV-infected by haemoglobin level (< or > 10g/dL).....	7
Study Investigators.....	8-10

Appendix Table 1: Baseline characteristics of 715 HIV infected patients stratified by CD4 count

	CD4 count*				p-value
	<50/ μ l (N = 114)	50-199/ μ l (N = 339)	200-350/ μ l (N = 165)	>350/ μ l (N = 97)	
South African patients – no. (%)	94 (82.4)	283 (83.4)	129 (78.1)	66 (68.0)	<0.01
Non-South African patients – no. (%)	20 (17.5)	56 (16.5)	36 (21.8)	31 (31.9)	
Mean age – yrs.	35.1 \pm 8.3	36.2 \pm 8.7	34.8 \pm 10.2	32.1 \pm 9.8	<0.01
Male sex – no. (%)	63 (55.2)	201 (59.3)	98 (59.4)	38 (39.2)	<0.01
Mean weight – kg	58.7 \pm 13.6	58.6 \pm 11.8	58.9 \pm 12.4	55.6 \pm 11.2	0.16
Mean duration of symptoms – days	28 (2-180)	28 (2-110)	30 (3-150)	21 (3-210)	0.68
NYHA FC I and II – no. (%)	60 (53.1)	230 (67.5)	114 (69.1)	70 (72.1)	0.01
NYHA FC III and IV – no. (%)	53 (46.9)	109 (32.2)	51 (30.9)	27 (27.8)	

Tachycardia (HR >100 bpm) – no. (%)	78 (68.4)	203 (60.1)	91 (55.2)	64 (66.7)	0.09
Hypotension (SBP ≤90 mmHg) – no. (%)	10 (8.7)	29 (8.5)	13 (7.9)	9 (9.4)	0.98
Peripheral oedema – no. (%)	44 (38.6)	111 (32.7)	58 (35.2)	35 (36.1)	0.69
Palpable paradoxus – no. (%)	23 (20.2)	67 (19.8)	28 (16.9)	16 (16.5)	0.79
Anaemia (haemoglobin ≤ 10g/dL) – no. (%)	87/113 (76.9)	229/337 (67.9)	115/165 (69.7)	49/96 (51.0)	<0.01
Renal impairment (creatinine >105 µmol/l) – no. (%)	19/106 (17.9)	34/328 (10.4)	19/153 (12.4)	4/90 (4.4)	0.03
White cell count >10 X 10⁹/l – no. (%)	8/114 (7.0)	18/337 (5.3)	10/165 (6.1)	5/96 (5.2)	0.91

LVEF <55% - no. (%)	0	2 (0.6%)	0	0	0.52
Tamponade at presentation – no. (%)	49/84 (58.3)	146/244 (59.8)	70/111 (63.1)	35/57 (61.4)	0.91
Constriction at presentation – no. (%)	36/72 (50.0)	119/230 (51.7)	63/112 (56.3)	30/59 (50.9)	0.81
Pulmonary infiltrates on CXR – no. (%)	43/106 (40.5)	128/320 (40.0)	55/153 (35.9)	28/88 (31.8)	0.46
Patients on anti-retroviral treatment at baseline – no. (%)	20/114 (17.5%)	55/334 (16.5%)	36/163 (22.1%)	25/95 (26.3%)	0.12

Note: *Baseline CD4 count available for 715/939 (76.1%) HIV infected patients. bpm, beats per minute; CXR, chest radiograph; HR, heart rate; LVEF, left ventricular ejection fraction NYHA FC, New York Heart Association functional class; SBP, systolic blood pressure.

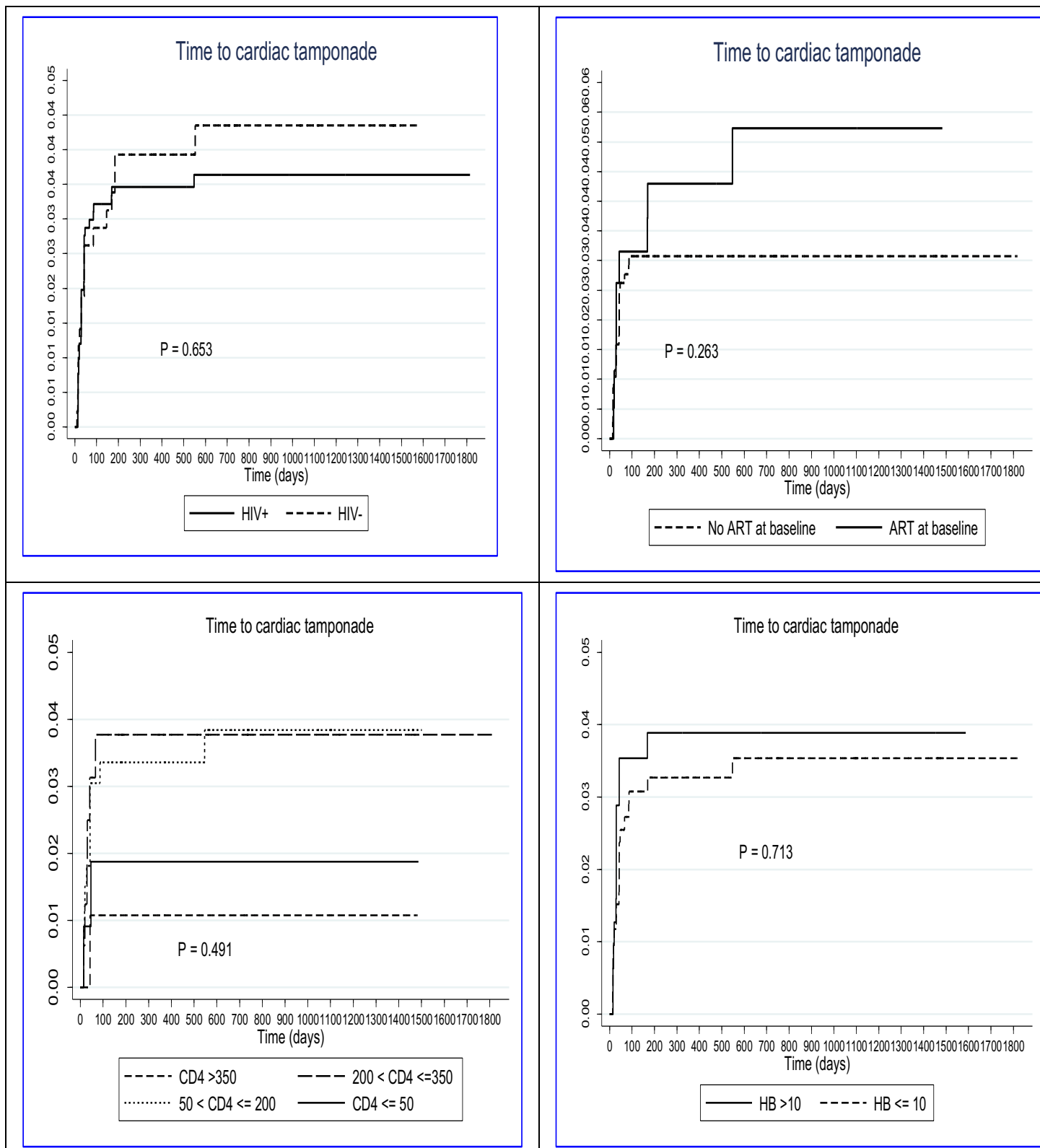
Appendix Table 2: Baseline characteristics of HIV infected patients stratified by exposure to anti-retroviral treatment at baseline.

	Anti-retroviral treatment at baseline (N 199)	No anti-retroviral treatment at baseline (N 713)	p-value
South African patients – no. (%)	116 (58.3)	561 (78.6)	<0.01
Non-South African patients – no. (%)	83 (41.7)	152 (21.3)	
Mean age - yrs	38.1±10.4	34.6±9.1	<0.01
Male sex – no. (%)	99 (49.7)	405 (56.8)	0.07
Mean weight – kg	57.6±11.1	58.3±14.0	0.42
Mean duration of symptoms – days	39.2±33.4	34.8±30.5	0.07
NYHA FC I and II – no. (%)	144 (72.4)	472 (66.3)	0.10
NYHA FC III and IV – no. (%)	55 (27.6)	240 (33.7)	
Tachycardia (HR >100 bpm) – no. (%)	98/199 (49.3)	435/711 (61.2)	<0.01
Hypotension (SBP ≤ 90mmHg) – no. (%)	16/199 (8.0)	71/712 (9.9)	0.41
Peripheral oedema – no. (%)	81 (40.7)	251 (35.2)	0.15
Palpable paradoxus – no. (%)	31 (15.5)	133 (18.6)	0.31
Anaemia (haemoglobin ≤ 10g/dL) – no. (%)	108/197 (54.8)	498/711 (70.0)	<0.01
Renal impairment (creatinine >105 µmol/l) – no. (%)	14/158 (8.8)	82/678 (12.1)	0.25
White cell count > 10 x 10⁹/l – no. (%)	45 (6.3)	9 (4.5)	0.30

LVEF \leq 55% - no. (%)	1 (0.5%)	2 (0.3%)	0.62
Effusion size moderate to large (\geq 1cm) – no. (%)	183/196 (93.4)	627/687 (91.3)	<0.01
Tamponade at presentation – no. (%)	69/124 (55.6)	280/507 (55.2)	0.93
Constriction at presentation – no. (%)	64/131 (48.8)	235/499 (47.1)	0.71
Pulmonary infiltrates on CXR – no. (%)	57/187 (30.5)	244/660 (36.9)	0.10

Note: bpm, beats per minute; CXR, chest radiograph; HR, heart rate; LVEF, left ventricular ejection fraction; NYHA FC, New York Heart Association functional class; SBP, Systolic blood pressure.

Appendix Figure 1: Kaplan-Meier curves for outcome of recurrent cardiac tamponade requiring pericardiocentesis: A) HIV infected versus HIV non-infected; B) HIV infected on ART at baseline versus no ART at baseline; C) HIV infected stratified by CD4 category; and D) HIV infected by haemoglobin level (< or > 10g/dL)



Investigators – number of patients enrolled in each country and site are in parenthesis

South Africa (1014): Groote Schuur Hospital, Cape Town (252) – O. Ajayi, M. Badri, M. Chhiba, C. Chishala, C. Cupido, A. Deffur, M. M. De Vries Basson, P. Mangena, K. Moeketsi, M. Mubanga, P. Namale, P. Raubenheimer, J. Shenje, N. Schreuder, Y. Vallie, N. van der Schyff; Livingstone and Provincial Hospitals, Port Elizabeth (70) – N. Alam, F. Khan, P. Mkoko, A. Mutyaba; Nelson Mandela Academic Hospital, Mthatha (352) – M. Valavi; King Edward VIII Hospital, Durban (163) – V. Bayi, N. Duze, U. Lalloo, T. C. Manzini, M. R. Matshela; Chris Hani Baragwanath Hospital, Soweto (50) – K. Sliwa-Hahnle; Dr. George Mukhari Hospital, Tshwane (59) – P. Ntuli, N. L. Nqeketo, M. J. Mphahlele; Charlotte Maxeke Johannesburg Academic Hospital, Johannesburg (66) – L. Ntyintyane, R. Ramjee, N. Tsabedze. *Mozambique (133)*: Eduardo Mondlane University, Maputo (133) - Catarina Muinga. *Malawi (90)*: Kamuzu Barracks, Lilongwe (90) – K. Dembo, K. Chipanda, J. Mipungwi. *Nigeria (23)*: University College Hospital, Ibadan (2) – A. Adebisi; Aminu Kano Teaching Hospital, Kano (7) – N. A. Ishaq, M. S. Mijinyawa; Federal Medical Centre, Abeokuta (5) - B. O. Aina; Abuja Teaching Hospital, Abuja (1) – A. Ariyo; University of Calabar Teaching Hospital, Calabar (5) – I. Odudu-Umoh, C. Akpan; Ahmadu Bello University Teaching Hospital, Zaria (2) – M. S. Isa, A. Oyati. *Sierra Leone (26)*: Connaught Hospital, Freetown (26) – S. Conteh, A. Serry-Bangura. *Zimbabwe (31)*: Parirenyatwa Hospital, Harare (31) – N. T. Munyandu, T. G. Fana. *Uganda (62)*: Mulago Hospital, Kampala (62): D. B. Kiggundu. *Kenya (23)*: Moi Teaching and Referral Hospital, Eldoret (23) – R. Yanoh.

Steering Committee

B.M. Mayosi[†], M. Ntsekhe, J. Bosch, S. Pandie, F. Gumedze, V. Francis, M. Smieja, S.K. Sharma J. Miller, L. Joldersma, H. Jung, J. Pogue[†], L. Thabane, T. Gasperini, (ex-officio, Canadian Institutes of Health Research), S. Yusuf.

Events Adjudication Committee

G. Meintjes (Chair, Full Trial), P.J. Commerford, H. Esmail, A. Horak, J. Nachega (Chair, Pilot Phase), T. Oni, S. Pandie, T. Pillay, K. Rebe, R. Scott Millar, K. Sliwa-Hahnle.

Project Coordinating Office

V. Francis[†] (Trial Coordinator), U. September (Research Nurse), R. Vergotine (Quality Control Officer), M. Van de Wall (Echocardiographer), L. Mhlanti (Data Capturer), J. Saaiman (Research Assistant), F. Gili (Research Assistant), S. Nkepu (Fieldworker).

Population Health Research Institute (PHRI) IMPI Project Team

J. Bosch (Chair), J. Miller, H. Jung, L. Joldersma, J. Pogue[†], S. Pandie, S. Hall, A. Abdallah, M. Kuofie.

Research Assistants, Coordinators, Fieldworkers and Pharmacists (by country and site)

South Africa: Groote Schuur Hospital, Cape Town – C. Gibbon (Pharmacist), N. Killa[†] (Pharmacist), L. Petersen (Coordinator), F. Walker (Pharmacist); Livingstone and Provincial Hospitals, Port Elizabeth – H. Abercrombie (Research Assistant), N. Rossi (Coordinator), X. Sengoatse (Fieldworker); Nelson Mandela Academic Hospital, Mthatha - W Grootboom (Pharmacist), N.P. Mdlatu (Coordinator), N. Ndinisa (Research Assistant); King Edward VIII Hospital, Durban – Y. Kriel (Coordinator), N. Lushozi

(Echocardiographer), N. Mkhize (Research Assistant), G. Ntonga (Research Assistant), R. Pillay (Echocardiographer); Chris Hani Baragwanath Hospital, Soweto - P. Gumede (Coordinator), P. Methusi (Coordinator); Dr. George Mukhari Hospital, Tshwane – L.K. Rikhotso (Research Assistant), T. Tau (Coordinator); Charlotte Maxeke Johannesburg Academic Hospital, Johannesburg - V. Paton (Coordinator), K. Robertson (Pharmacist); *Mozambique*: Eduardo Mondlane University, Maputo – G. Muchanga (Coordinator); *Malawi*: Kamuzu Barracks, Lilongwe – R. Chigona (Research Nurse), W. T Kaneka (Pharmacist), M. Malahleka (Coordinator), J. Mwantani (Research Nurse); *Nigeria*: University of Calabar Teaching Hospital, Calabar – A. Odidi (Research Nurse). *Sierra Leone*: Connaught Hospital, Freetown – K. Conteh (Research Nurse). *Zimbabwe*: Parirenyatwa Hospital, Harare – E. Dzvinayi (Coordinator), I. Gudza (Coordinator), P. Manuhwa (Research Assistant), V.G. Masore (Pharmacist), S. Mudzinswa (Pharmacist); *Uganda*: Mulago Hospital, Kampala – R. Bujungu (Coordinator), S. Mugambe (Research Assistant). *Kenya*: Moi Teaching and Referral Hospital, Eldoret – R. M. Jepkokir (Coordinator), S. W. Njuguna (Pharmacist);

Statistical Support Team

F. Gumedze (University of Cape Town), J. Pogue[†], H. Jung, P. Gao (Population Health Research Institute, Hamilton Health Sciences and McMaster University).

Data Safety and Monitoring Committee (DSMC) / Trial Monitoring Committee (TMC)

D. Sackett[†] (Chair), C. Lombard, J. Moodley, H. Reuter, J. Volmink.

[†]Deceased